

“When our client called us in, she was stuck!” comments Matthew Robinson. “The new extension was very contemporary and the client felt that her antique and family pieces would have to go. The only clear instruction was that she hated the colour orange. Four colour schemes were presented for the space and to the client’s surprise she chose our favourite – the one with orange accent tones!”

Classically contemporary furniture was selected by Matthew and his team, who were able to revitalise existing pieces using modern fabrics to create an eclectic mix of old and new.

The new extension features large areas of glazing, for which window treatments were needed. This proved simple for Matthew; having worked at curtain track and pole specialist Silent Gliss, window dressings are his speciality.

He chose large, sheer Roman blinds along the vast south-facing bank of windows. These create privacy and control glare, gently diffusing the light. Roman blinds provide a softer solution than other types of treatments for a comfortable living space. Secondary window dressings in the form of lined eyelet-topped curtains in a gold and navy pinstripe silk add a luxurious touch and help create a cosy living space after dark.

Some of the smaller windows feature Roman blinds in the same fabric as the curtains, others feature the same sheer fabric as the main blind. “During my time working on the Continent I saw how sheer Roman blinds provide a much more contemporary solution for privacy and glare than the net curtains we tend to use in this country” says Matthew.

Sofas and armchairs are from the Josephine range by Zoffany, covered in a gold fabric from Warwick. A pair of contrasting chairs by Robert Langford are upholstered in a red velvet silk with contrast gold piping. “The red accent packs a punch and adds a real sense of glamour to the bay window area. This provides a distinct second zone in the long room and is a perfect place to read and contemplate the beautiful views across the Devon countryside” says Matthew.

The ottoman is upholstered in a rich silk velvet fabric from Zimmer and Rohde. The footstool rests on a bespoke rug in silk wool with a contrasting black border from Jacaranda. Contrasting coloured scatter cushions to match the ottoman complete the soft furnishings.

The floor light is by Artemide with a bespoke fabric covered shade.



CLASSIC contemporary

A Devon extension has been elegantly created combining family heirlooms with sumptuous upholstery and stylish window dressings.



GET THE LOOK

1 NATURAL WOOD

Made of 83mm natural oak, these boards are made of solid wood. It costs £31 per square metre. 020 8871 9771, www.naturalwoodfloor.co.uk

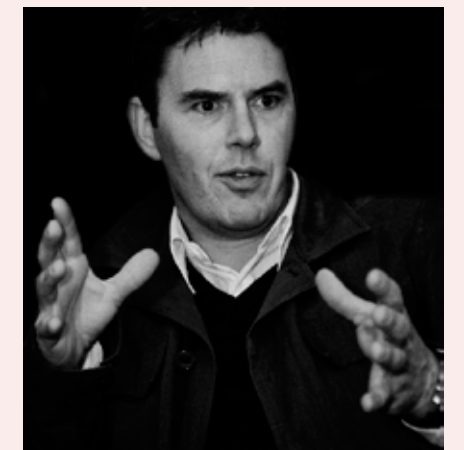


2 COMFORTABLY CURVY

The Halston two-seater sofa, available in cream and pale blue, has a hardwood frame and fabric upholstery. Chairs are also available. The sofa retails at £399. www.made.com

3 MODERN STOVE

The Getaria stove is manufactured in the Czech Republic by Romotop and operates at 82 per cent efficiency, at 6kW capacity. It has a concealed log store at the base. Price £1,249. 01308 427234, www.romotop.com



MEET THE DESIGNER

Matthew spent 10 years at curtain track and pole manufacturer Silent Gliss which guided his career in the world of interior design. During his time there as marketing manager, he collaborated with various acclaimed designers, including Kelly Hoppen, before he moved to Holland as general manager of Silent Gliss Benelux.

Relocating to Devon four years later, Matthew formed Inside Spaces, an interior design consultancy, specialising in window treatments.

Working closely with brother-in-law Jose Cortizo, director of Devon Stone, the two companies grew and now offer a complete interior design service, including stone flooring and walling, soft furnishings, lighting and bespoke furniture. Working together as Jam Interiors, all soft furnishings are skilfully made at the company's own curtain making workshop, another acquisition made in 2010.

With two showrooms in Devon and another planned for 2011, Matthew seems set for another busy year ahead.

Jam Interiors
www.jaminteriorsgroup.com

CONTACTS

Curtains in Bosen design: Chase Erwin
www.chase-erwin.com

Roman blinds in Trevira' fabric:
JAM Interiors workshops
www.jaminteriorsgroup.com

Sofa, armchairs and footstool from Josephine range: Zoffany www.zoffany.com

Additional armchairs: Robert Langford
www.robertlangford.co.uk

Upholstery in Riverside design, colour Aki:
Warwick Fabrics www.warwick.co.uk

Upholstery in Ralph design: Today Interiors
www.today-interiors.co.uk

Footstool and matching cushions, Daphne fabric: Zimmer & Rohde
www.zimmer-rohde.com

Lamp: Artemide www.artemide.com

Bespoke rug: Jacaranda
www.jacarandacarpets.com